

# CENTURY PLACE

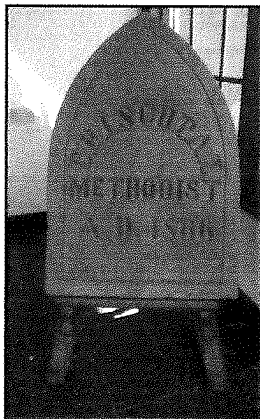
411 Queen Street, Newmarket

---



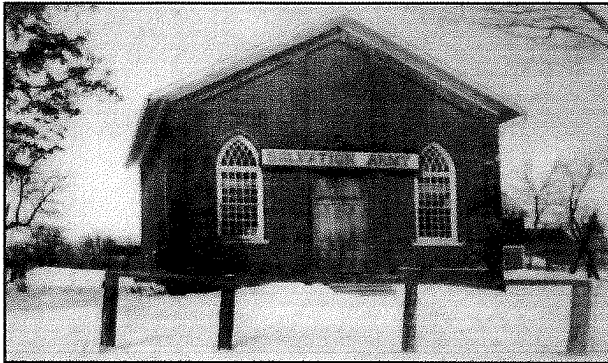
Existing Building, 1998.

The present Century Place was built in 1866 by the Episcopal Methodist Church and remained with this church until purchased by the Salvation Army in 1906. The church was maintained by the Salvation Army until 1989 when it was purchased by Brivic Investments Inc. and renovated into the present office environment. It is believed that the flat-roofed structures at the front and rear were added in the 1930's together with the expansion of the basement.



The original foundation stone was laid by the Episcopal Methodist Church in 1866. This stone was discovered during the 1989 renovations. The stone was an insert blocking a small window now seen high above the entrance. The writing on the stone had been covered over with plaster and brickwork, presumably when the church was taken over by the Salvation Army in 1906.

(over)



Church in 1908.

(From Salvation Army archives)

The renovations by Brivic Investments included:

- Exposure and reconstruction of original main entrance.
- Addition of the glass front entrance.
- Removal of the ceiling and exposure of original wooden roof trusses.
- Exposure and reconstruction of original main entrance arch.
- Addition of skylight windows.
- Addition of mezzanine.
- Re-routing of rear stairway entrance.
- Retrofit of basement including offices and kitchen.

Thanksgiving Service

(Date unknown  
Probably 1920's)



We trust that visitors to this beautiful building, which is so much part of Newmarket's heritage, will enjoy it as much as we who occupy it. Have a wonderful day.

**Brivic Investments Inc.**